



MEMBERSHIP APPLICATION FORM
(Not to be used for renewing existing membership)

Please tick appropriate box

- Single Membership £29
- Joint Membership £43.50
- Single Senior (over 60) £21.75
- Joint Senior £32.60
- Student (under 26) £21.75
- Youth (under 18) free

Please use capital letters

Mr/Mrs/Miss/Ms
Surname:
First Name:
Occupation:
Dob:
Nationality:

2nd applicant (spouse/partner)

Mr/Mrs/Miss/Ms
Surname:
First Name:
Occupation:
Dob:
Nationality:

Please mention if you hold dual nationality
(If Swiss) Commune/canton of origin

Address:

Town: **Post code**

Tel/home: **Tel/office:**

Fax: **e-mail:**

If accepted, I will abide by the Rules of the New Helvetic Society dated 13th April 2000.

I enclose my remittance (made out to the **New Helvetic Society**) for the current annual subscription fee.
(Subscription fees are valid from one AGM, usually held in April, to the next.)

Signed Date

Proposer

How did you learn about our society?

Please send this application form together with your remittance to:
Marie-José Lindon, 10 Wychwood Way, Northwood, HA6 1EJ



16-18 Montagu Place
London W1H 2BQ
E-mail: Info@newhelveticsociety.org.uk
Website: www.newhelveticsociety.org.uk

Newsletter

Issue 27

Spring 2010

Inside this issue:

- Welcome from the President
- Past Events
- Forthcoming events
- Members' Information Corner

Dear members and friends,

February saw the showing of the film *Late Bloomers*. It was a cheeky tale charmingly told by cleverly mixing humour and melancholy. This endearing film brought a smile to your faces.



In March, together with the Federation of Swiss Societies in the UK, we organised a *picture from Late Bloomers* forum entitled "Switzerland and You". This was a first. Over seventy people from the Swiss community at large attended this debate. Many issues were raised such as the information provided by the Swiss authorities through the Swiss Review and Swissinfo. The worldwide Swiss community is concerned about the latter since the government is planning to cut the subsidies without which this vital source of information cannot survive. The Voluntary Old Age Insurance and the Disability Insurance were also discussed at length as was the introduction of biometric passports. The image of Switzerland abroad was also debated. Two main points were discussed, the banking policies and the referendum prohibiting the construction of minarets.

/..

./..

Even though the reporting by the British media was negative, it was felt that Switzerland is still perceived in a very positive way. The panel was led by a Swiss journalist and composed of three delegates of the Organisation of the Swiss Abroad in Bern representing the interests of the Swiss community in the UK.

In April, we had our AGM. It was nice to see so many of you turning up. We swiftly dealt with the agenda as no major issues were raised. Marina Malmed and Nathalie Monnot, our two co-opted Council members were duly elected as was Fairley Allan. The other members were re-elected. The success of this AGM shows that the New Helvetic Society is going in the right direction. After the AGM, our guest of honour, Mr Eduard Krall, Consul General at the Embassy of Switzerland, gave a lively talk about his experiences with the Swiss Federal Department of Foreign Affairs. It was an eye opener as he explained how such a nomadic and exciting life affects family life.

You will find details about our May event inside this issue.

You will also see what programme we have in store for you. I would like to draw your attention to the Swiss National Day London on 17 July 2010. We are sponsoring this event which is under new management. Details will be posted to you in due course but in the meantime please visit www.swissnationalday.co.uk for further information.

With my best wishes
Daniel Pedroletti



Members' Information Corner

The Society is pleased to welcome the following members:

**Theresa Eigenmann
Peter Cohn & Ivana Cohn-Merlini
Stanley Millis
Dr Yves Guisan
Fairley & Helen Allan
Alan Murphy
Tom Malmed**



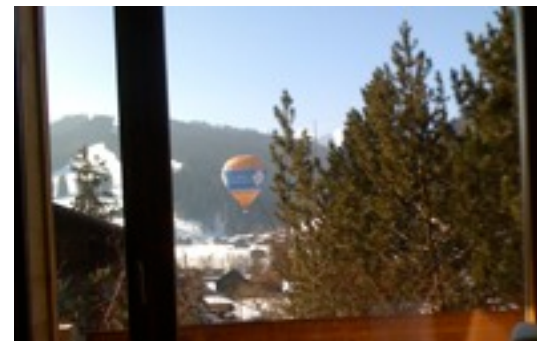
Send your ideas to The Editor, either by post to New Helvetic Society, 16-18 Montagu Place, London W1H 2BQ or by e-mail to info@newhelveticsociety.org.uk. The Newsletter comes out three times a year in January, May and September and copy deadlines are the first of the month prior to publications.

The Council would like to thank all the members who renewed their membership promptly and sent us messages of appreciation with their subscriptions. Among them we received a pretty card from

Christina Tamm:

Thank you for all you are doing for us! Sorry, I can't take part in all that is going on, as I am unable to go out much. But I enjoy reading about all the meetings and wish you well!

I thought I would share with you the view from my hospital bed in Saanen, where I was after a skiing accident!



Very good for the morale!

Geneviève Higgin

Forthcoming Events



Thursday 10 June 2010

“Nutritional Evening with Jeanne-Lyse Sibaud”

**7pm - Swiss Embassy, 18 Montagu Place,
London W1H 2BQ**

FOSSUK AGM Saturday 12th of June at the Swiss Embassy **1.30pm**

Saturday 17 July 2010

Swiss National Day

**doors open 3pm and close 10.30pm
UCL (University College London)
Gower Street, London WC1E 6BT**

August no event

Thursday 2 September 2010

Jazz Concert

**7pm - Swiss Embassy, 18 Montagu Place,
London W1H 2BQ**

Thursday 21 October 2010

A Journey through Switzerland with Robert Schumann

**7pm - Swiss Embassy, 18 Montagu Place,
London W1H 2BQ**

November Joint event with Unione Ticinese
A Ticinese architect to talk about Antartica

Saturday 11 December 2010

ESCALADE

January 2011 New Year Celebration

Details of the above events are posted to all our members along with a booking form and are also available on our website at www.newhelveticociety.org.uk.

2010 New Helvetic Society List of Council Members

President
Daniel Pedroletti



Vice-president
Fairley Allan

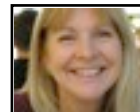
sorry no photo

Hon. Treasurer
Rosmarie Sabir



Secretary
vacant

Assistant Secretary
Marina Malmed



Membership Secretary
Marie-José Lindon



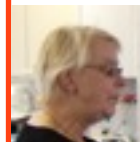
Events Organiser
Nathalie Monnot



Public Relations
Geneviève Higgin



Catering Coordinator
Vacant



88th Congress of the Swiss Abroad 20-22 August 2010

*Theme: Politic
representation of the
Swiss Abroad.*

Is a direct representation of the Swiss abroad in the Federal Parliament necessary and if yes should a 27th Swiss Canton be created?

Some politicians believe that it should be the case, while others see in it a complete revision of the true basis of our system. A question that interest everyone.

If you would like to participate, see page 21 of the Swiss Review. or www.aso.ch/en/offers

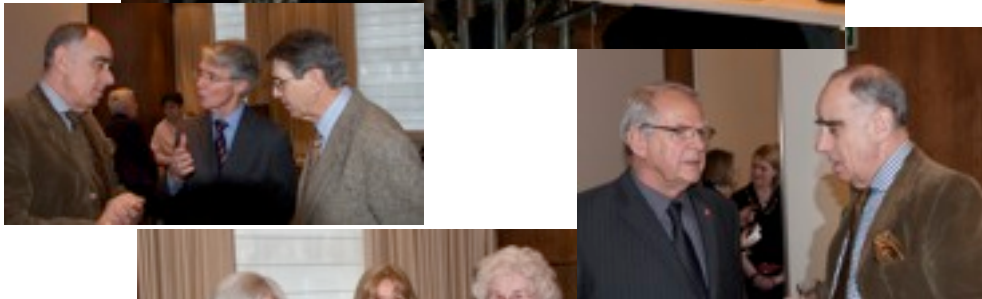


On behalf of the NSH, I would like to say a BIG THANK YOU to Peter for his time and availability on that occasion.

The British Library's website is worth a visit: <http://www.bl.uk/magnificentmaps/>



AGM on 1



1st May 20

A group of more than 30 members of our society and their guests had taken up the invitation to visit the exhibition *Magnificent Maps*.

Propag
of May.
Maps a
Peter ha
the exhi
exhibiti
wander
organis
school.
serve as
use as
hang in
very ac
others
exhibiti



1st
of
.H.
at
ne
ne
nd
ne
as
to
to
re
ne
ne

A very interesting and richly illustrated book of the exhibition completes the exhibition well. It is written by Peter Barber and Tom Harper and is available for sale at the British Library Shop.

Detail of Psalter World Map, c.1265
Despite its small size, this is one of the 'great' medieval world maps. It is probably a copy of the lost map which adorned King Henry III's bedchamber in Westminster Palace from the mid-1230s. The original colours are intact. Showing east at the top, it is a visual encyclopedia, embracing ancient history, politics, scripture and ethnography as well as geography.

